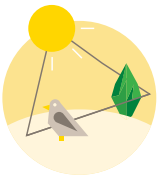


## THE SUSTAINABLE PLANET

**The future of our planet hangs in the balance - here's where you come in**

Tiptoe underneath a dense forest as the roots communicate with one another, risk the planet's future in a game of high-stakes pinball and meet a giant fish who's furious about the plastic waste that's clogging up his ocean home.

Despite the madness of human consumption and the harm we're causing the environment, it's not too late for us to save the world. Discover the innovative global projects that are creating new paths of Sustainability, and pledge to help preserve our planet for future generations.



## LEARNING OBJECTIVES:

Through '**The Sustainable Planet**' journey, students will:

1. Uncover the hidden treasures of our natural world, and see humanity's effects on the environment.
2. Discover and learn about the applications of innovative technology in the field of global sustainability.
3. Reflect on the importance of and identify individual actions that can help with re-balancing the earth for a brighter future.

# All four journeys are unique, and tailored for the different grade levels

## **LEVEL** KG/ FS

**DURATION:** 2.5 HOURS

**GUIDE:** PROVIDED

**ACCOMPANYING ADULT\* TO STUDENT RATIO:** 1:5

## **LEVEL** CYCLE 1/ PRIMARY SCHOOL

**DURATION:** 3 HOURS

**GUIDE:** PROVIDED

**ACCOMPANYING ADULT\* TO STUDENT RATIO:** 1:10

## **LEVEL** CYCLE 2/ MIDDLE SCHOOL

**DURATION:** 3.5 HOURS

**GUIDE:** PROVIDED

**ACCOMPANYING ADULT\* TO STUDENT RATIO:** 1:15

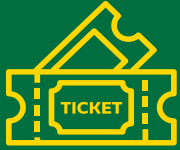
## **LEVEL** CYCLE 3/ HIGH SCHOOL

**DURATION:** 4 HOURS

**GUIDE:** PROVIDED

**ACCOMPANYING ADULT\* TO STUDENT RATIO:** 1:15

*\* The accompanying adult could be a school teacher, staff, parent, etc. that has been assigned by the school and will be held responsible for the students*



50 AED

## WHAT DOES A TICKET INCLUDE?

1. Entry to Expo 2020
2. Curated journeys exclusively for school groups
3. Group tour guide
4. Identification band
5. Free tickets for following ratio of accompanying adults to students:
  - KG/FS - 1:5
  - Cycle 1/ Primary School- 1:10
  - Cycle 2/ Middle School- 1:15
  - Cycle 3/ High School- 1:15

**Note:** lunch is not included.

### WE'VE GOT YOU COVERED!



Dedicated drop-off  
and pick up areas for  
school groups



Parking spaces  
for school buses



Rest areas for  
school bus  
drivers



EXPO  
2020  
DUBAI  
UAE



For more information visit  
[schools.expo2020dubai.com](https://schools.expo2020dubai.com)